



IRRI

2008 CGIAR FINANCIAL REPORT

An IRRI/CGIAR Secretariat Collaboration

A. Highlights of the 2008 Results

- **Financial outcome**
- **Contributions**
- **Expenditure**
- **Challenge Programs**
- **Financial Indicators**

B. Fiduciary Accountability Assessments

Actual vs. CGIAR Approved Program (\$m)

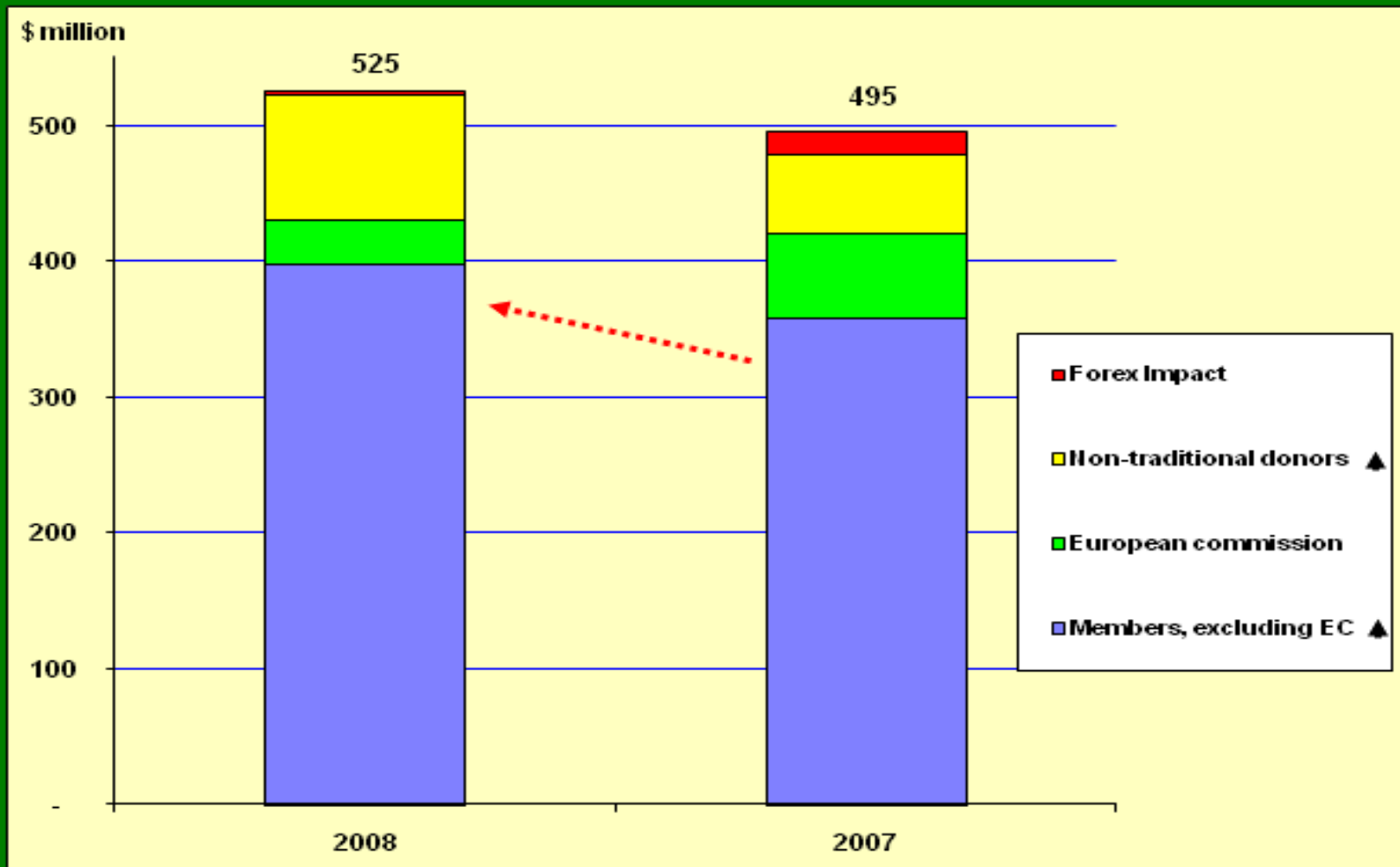
	Actual 2008 Outcome	2008 Plan Approved at AGM 07	Increase (Decrease) over Plan	
			Amount	%
Expenditure				
Centers	484	471	13	3
Challenge Programs	52	58	(6)	(10)
Total Expenditure	536	529	7	1
Revenue				
Contributions				
Centers	473	436	37	9
Challenge Programs	52	42	10	24
Total contributions	525	478	47	10
Center Earned Income	22	17	5	31
Total Revenue	547	495	52	11
Net operating result	11	(34)	45	(133)

Statement of Activity (\$m)

	2008	2007	Increase (Decrease) Amount	%
Revenue				
Contributions	525	495	30	6
Center earned income	22	25	(3)	(11)
Total	547	520	27	5
Expenditure				
Personnel	237	224	13	6
Supplies & services	150	150	0	0
Collaboration & partnerships	89	77	12	16
Travel	42	37	5	13
Depreciation	18	18	0	2
Total	536	506	30	6
Net operating result	11	14	(3)	(20)

Financial Outcome

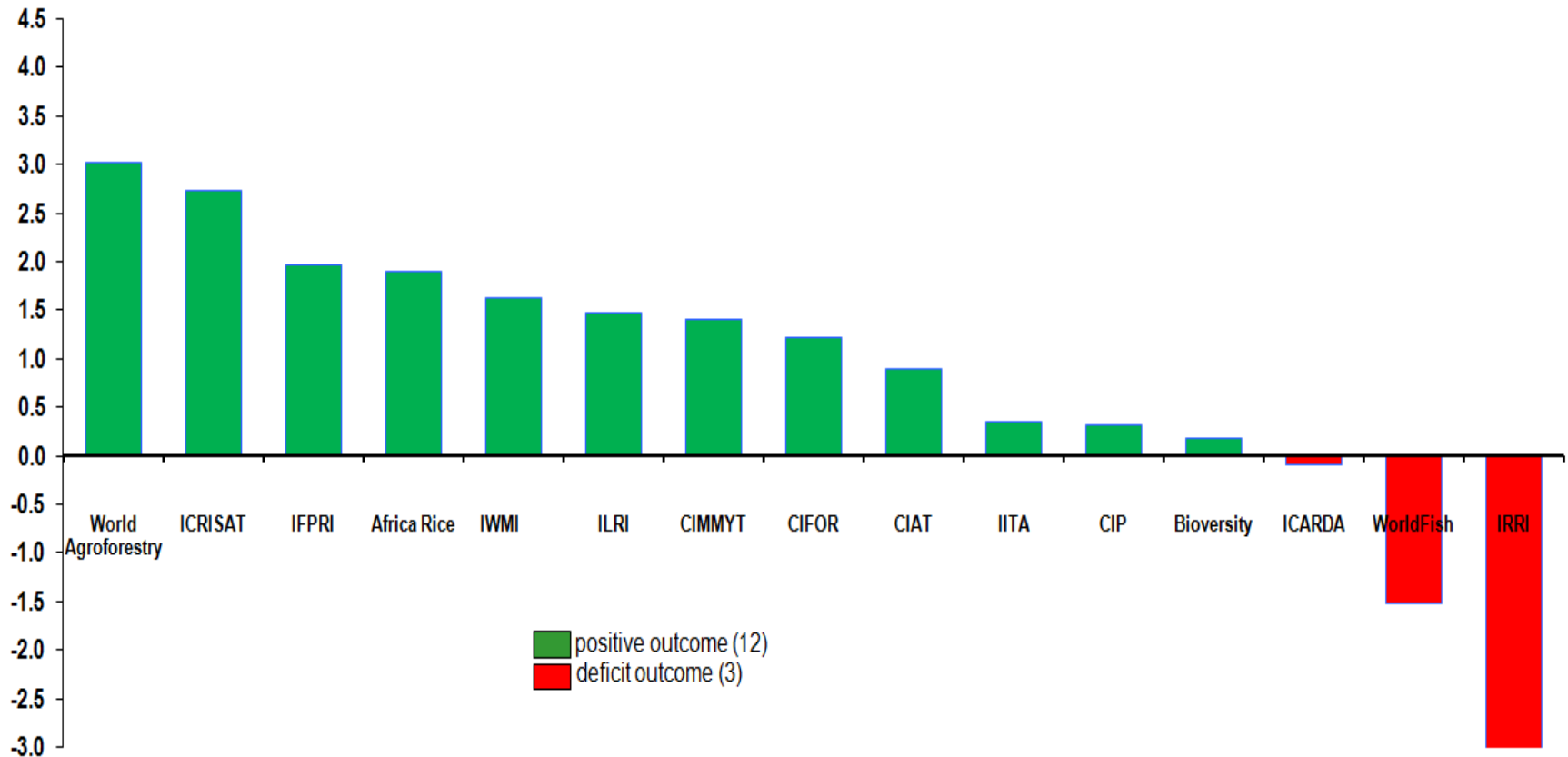
Grants Revenue



Financial Position (\$m)

	2008	2007	Increase (Decrease)
Total Assets	625	572	53
Total Liabilities	380	335	45
Net Assets(Reserves):			
Unrestricted	165	159	6
Fixed Assets	78	76	2
Restricted	2	2	0

Financial Results by Center
(\$m)

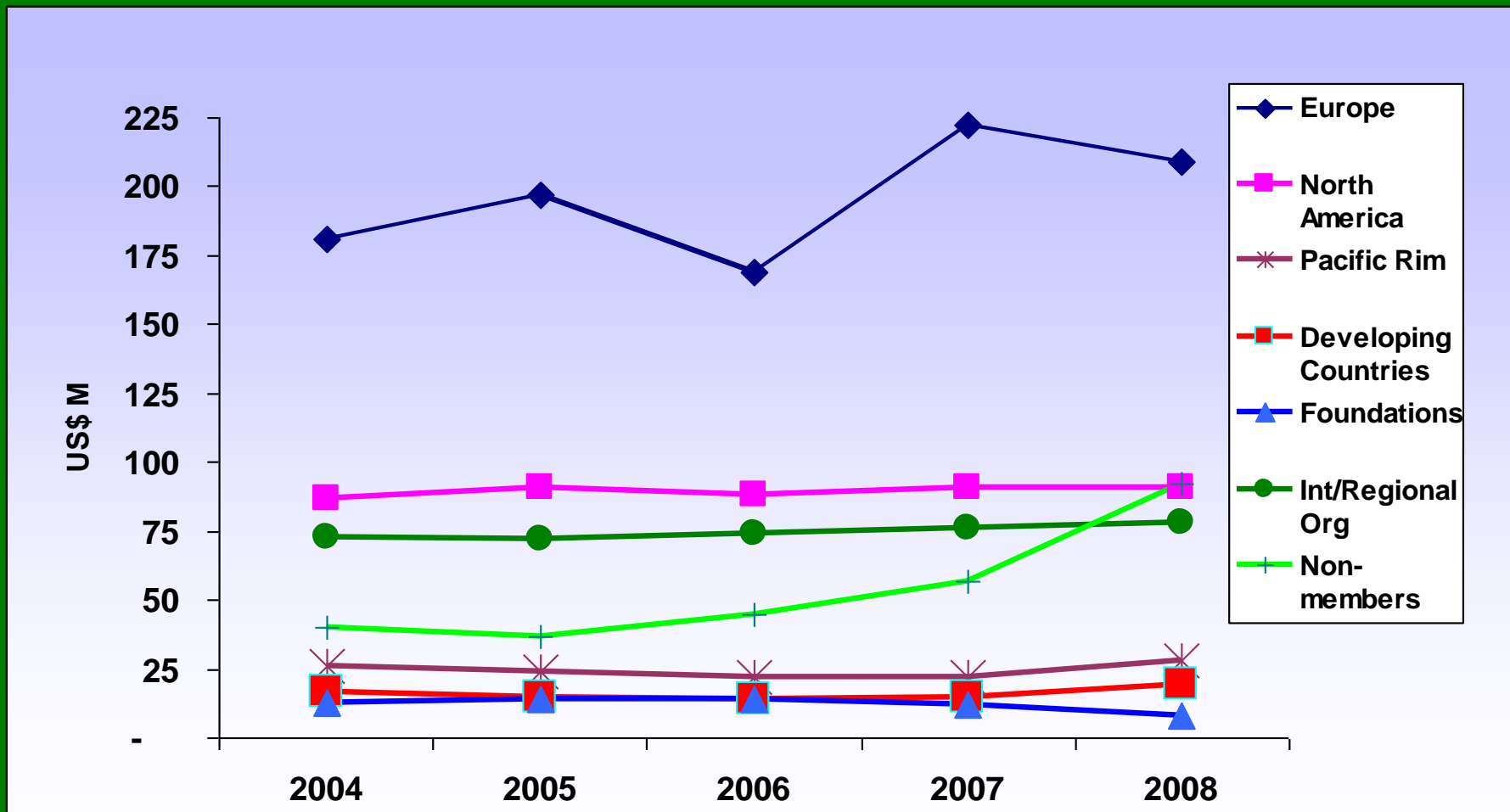


Cumulative Contributions by Member Groups 1972 to 2008 (\$m)

Total	8,706	
Europe	3,313	38%
North America	1,896	22%
Pacific Rim	827	10%
Developing Countries	224	2%
Foundations	247	3%
Int'l & Regional Org	1,789	21%
Non-members	411	5%

Contributions

Trends by Member Group 2004 to 2008 (\$m)



Contributions

Total Contributions (\$m)

	<u>2008</u>	<u>2007</u>	<u>Increase (Decrease)</u>		No. of Donors
			<u>Amount</u>	<u>%</u>	
Europe	209	222	(13)	(6)	18
North America	91	91	0	0	2
Pacific Rim	28	22	7	30	4
Developing Countries	20	15	5	33	21
Foundations	8	12	(3)	(29)	5
Int'l & Regional Org	78	76	2	2	11
Non-members	91	57	34	59	
Total Contributions	525	495	30	6	61

61 of 64 CGIAR Members

61 of 64 CGIAR Members

Contributions

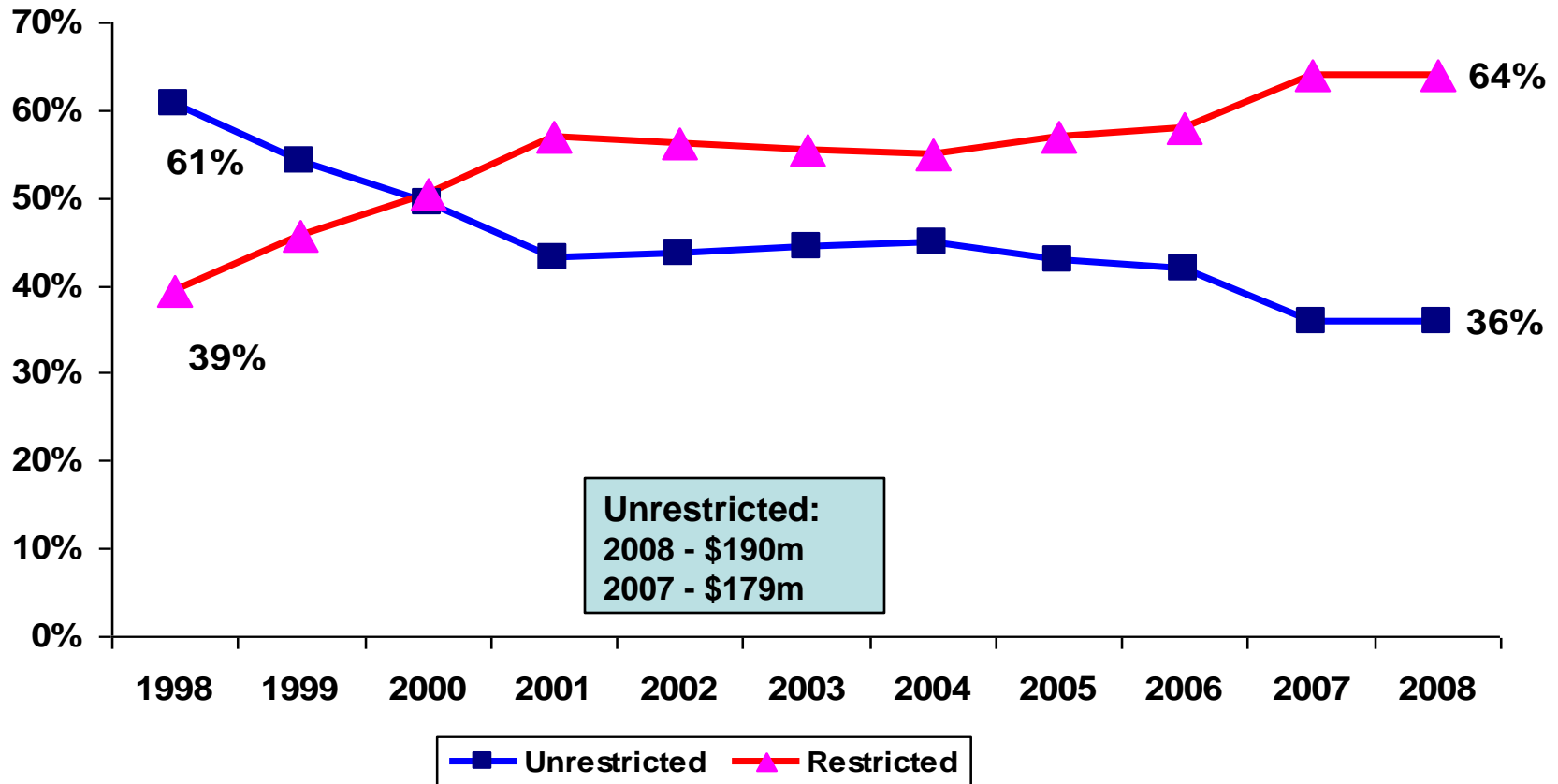
Top Member Contributions

(\$m)

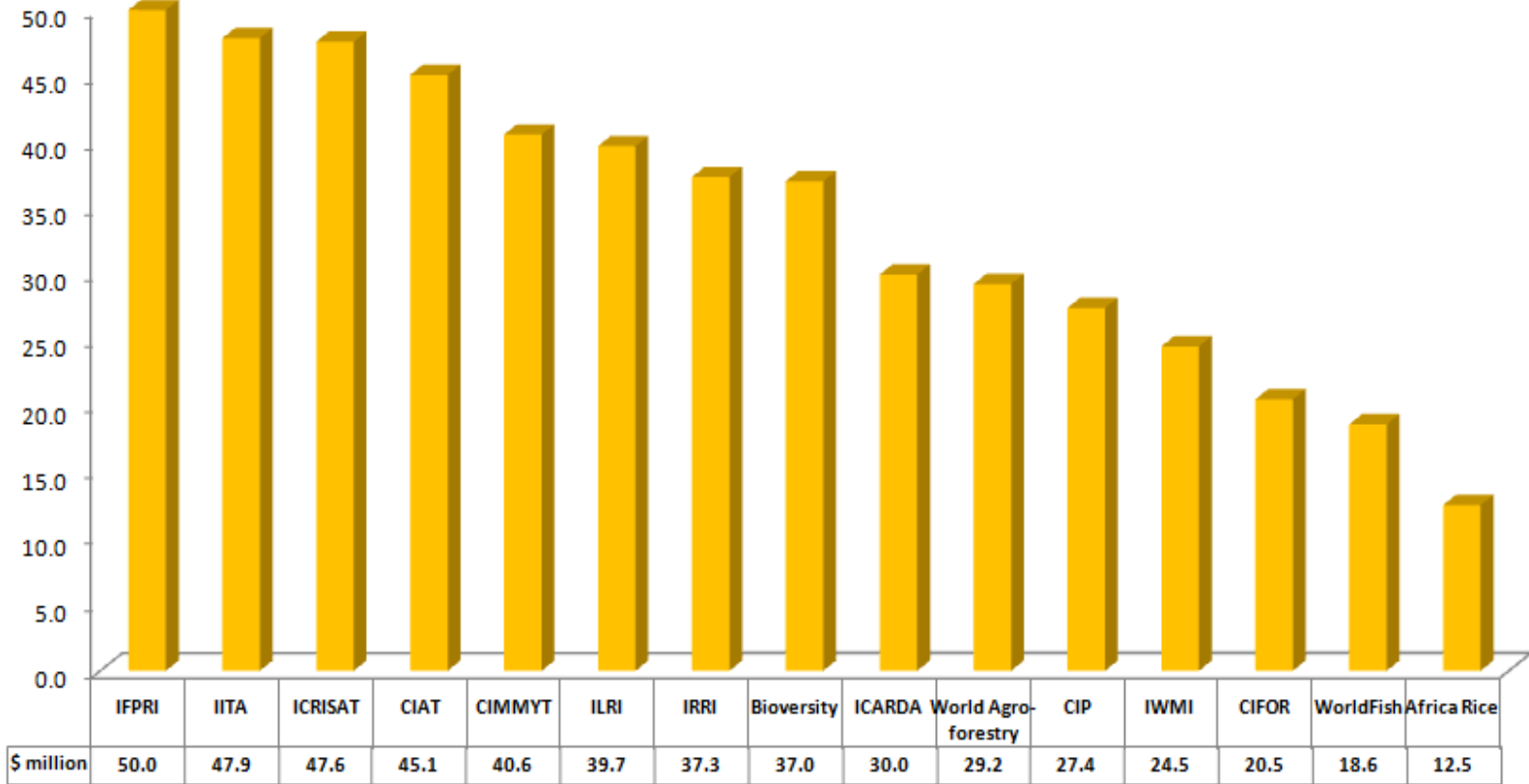
2008		2007	
Industrialized Countries and Multilateral Organizations			
United States of America	58	European Commission	62
World Bank	50	United States of America	60
United Kingdom	45	World Bank	50
Canada	33	United Kingdom	45
European Commission	33	Canada	31
Developing Countries			
India	8	India	7
Nigeria	3	China	1
China	1	Kenya	1
Kenya	1	Pakistan	1
Mexico	1	Colombia	1

Top 15 CGIAR Contributors provide 68% of 2008 Funding

**CGIAR Unrestricted and Restricted Funding Trends
1998 to 2008**

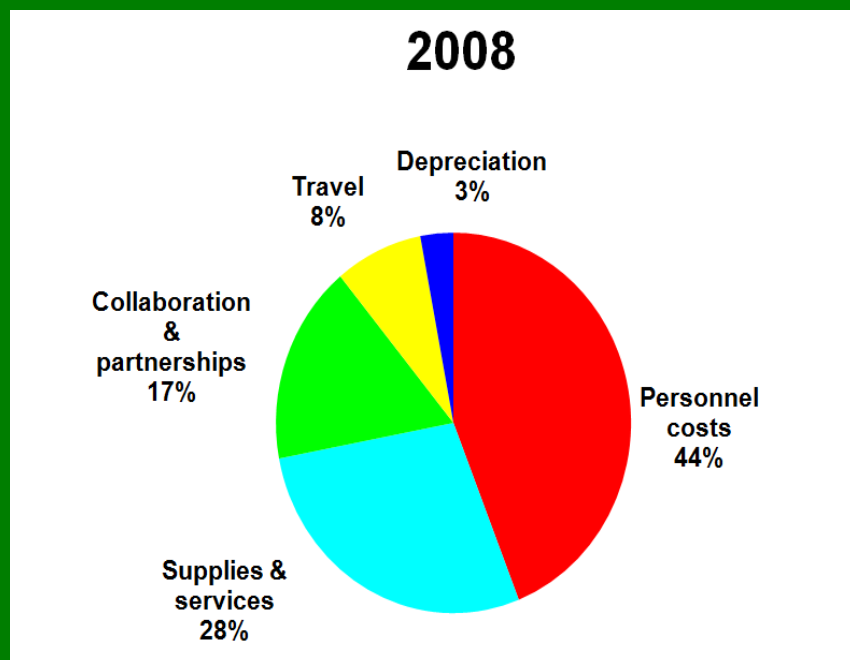


2008 Funding by Center

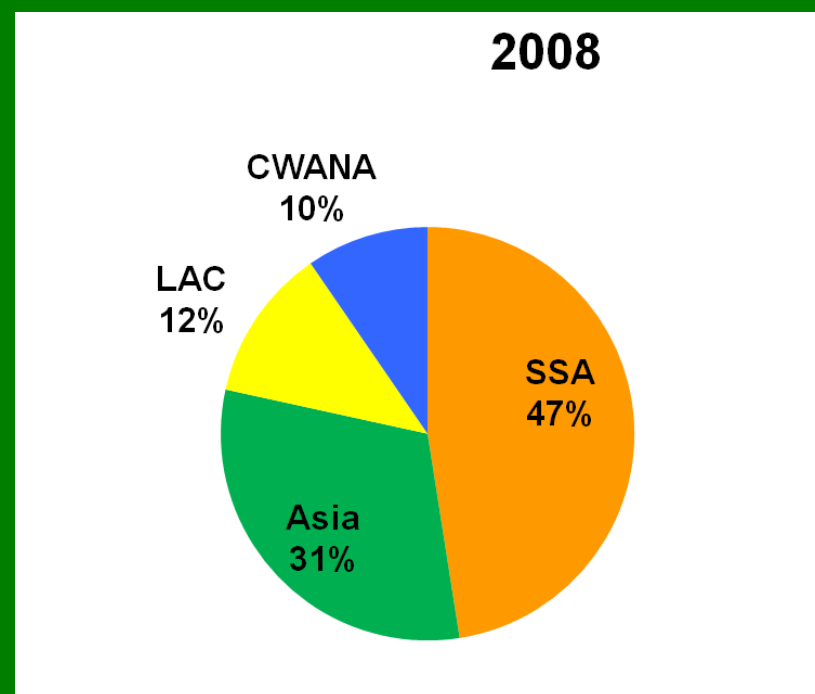


Expenditure

by Object



by Region



Challenge Programs

Summary (\$m)

2008			
	Available	Expenditure	Result
Harvest Plus	20.9	13.7	7.2
Water & Food	10.3	14.7	(4.4)
Generation	8.9	19.0	(10.1)
SSA	4.2	4.6	(0.4)
2nd cycle	0.6	0.6	0.0
Total	44.9	52.6	(7.7)

Financial Indicators Matrix

	Liquidity 90 - 120 Days	Adequacy of Reserves minimum 75 days	Indirect Cost Ratio %	Cash Management on Restricted Operations <1
Africa Rice	181	181	29	1.53
Bioversity	121	81	19	0.76
CIAT	31	39	18	0.30
CIFOR	213	176	20	0.24
CIMMYT	165	106	19	0.33
CIP	92	84	13	0.16
ICARDA	205	124	21	0.65
ICRISAT	170	127	23	0.30
IFPRI	114	94	16	0.43
IITA	158	158	20	0.25
ILRI	117	90	16	0.25
IRRI	260	260	17	0.11
IWMI	132	104	26	0.22
World Agroforestry	229	178	21	0.74
WorldFish	119	107	19	0.95
CGIAR Average	150	123	19	0.36

- Integral part of CGIAR performance indicators
- The minimum standard will be 90 days beginning 2011

Progress in financial

management using example of reserves indicator

	2003	2004	2005	2006	2007	2008
Africa Rice	23	58				
Biodiversity	67			67		
CIAT	58	63	47	18	39	39
CIFOR						
CIMMYT	33	50	74			
CIP						
ICARDA						
ICRISAT						
IFPRI						
IITA						
ILRI						
IRRI						
IWMI	54	65	71	64		
World Agroforestry	71					
WorldFish						

Fiduciary Accountability Assessments

- **Financial Peer Review**
 - **Financial Reporting**
 - **Financial Management**
- **Financial Administration**

Financial Peer Review

- **Financial reporting**

Standard: CGIAR Accounting Policies and Reporting Practices (FG2)

Financial Administration

- **Multi Donor Trust Fund (MDTF) at World Bank**
 - 2008 disbursements - \$105 m
 - 13 active participants
- **World Bank Account (Development Grant Facility)**
 - FY08 allocation of \$50 m
 - FY10 application submitted for \$50 m



IRRI

THANK YOU.